

Lamello



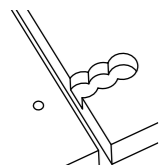
## Cabineo X

Cabinet connector and shelf support without edge drilling

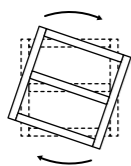
- No edge drilling
- Locked shelf
- Multifunctional housing



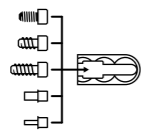
## Features



**No edge drilling**  
For use with CNC without edge drilling



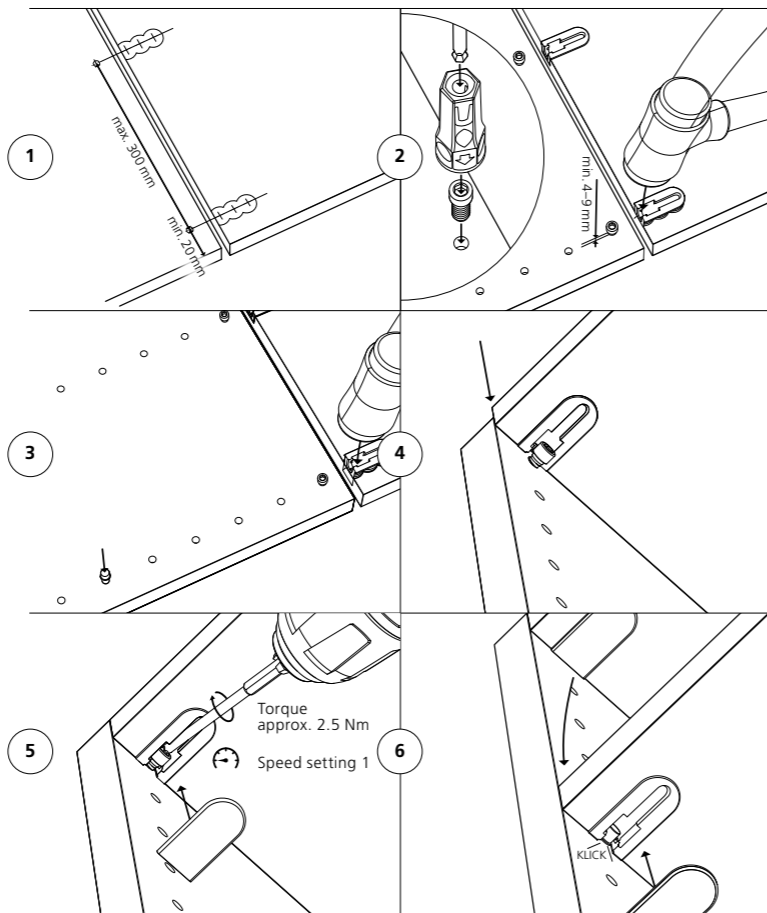
**Locked shelf**  
Secured against pulling out and lifting off



**Multifunctional housing**  
Same housing for connectors and adjustable shelves

Cabineo X is a connector for cabinets and shelves, can be used with all CNC machines and is pressed into place in the workshop or on site. Due to the open housing, it is possible to insert a Cabineo screw from the top and screw it into the counterpart with a hexagon bit. Using it with screws, Cabineo X is ideal when installing shelves into already joined cabinets or when assembling corner joints. Combined with shelf supports, Cabineo X prevents shelves from being pulled out.

## Function



## Applications

- Open shelves
- Built-in cupboards
- Bookshelves
- Fixed or adjustable shelves
- Access covers

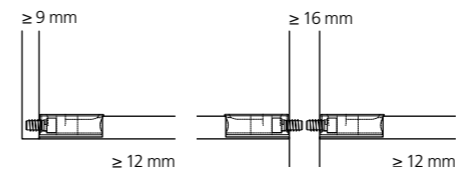
## Compared with cam and dowel standard

- Same housing for connectors and adjustable shelves
- Stable corner connection due to high clamping force
- Anti-twist housing
- Flat pack possible
- Cover caps in 12 colours

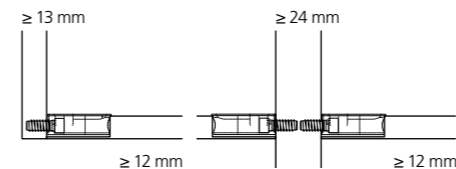


## Technical data

### Joining methods



Cabineo 8 screw



Cabineo 12 screw

Size	33.8 × 16.5 × 10.8 mm	
Screw length	8 mm or 12 mm	
Shelf support	Ø 3 mm or Ø 5 mm	
Cutter	Ø 12 mm or smaller	
Drill	Ø 5 mm and Ø 15 mm	
Material housing	Fiberglass reinforced plastic	
Installation tolerance	Long. ± 0.5 mm	
Strength per connector without dowel (N)		
Particle board 19 mm Up to	Tensile strength (N)	Shear strength (N)
Cabineo 8 screw	480 <sup>1</sup>	530 <sup>1</sup>
Cabineo 12 screw	770 <sup>1</sup>	850 <sup>1</sup>

<sup>1</sup> See comment on load limits on our website Lamello.com

## Articles



Cabineo X	Art. No.
500 pieces	<b>186360</b>
2000 pieces	<b>186361</b>

### Cabineo X black

500 pieces	<b>186365</b>
2000 pieces	<b>186366</b>

### Cabineo X starter set

Art. No.	Art. No.
Cabineo X (80 pieces),	<b>186307</b>
Cabineo 12 screw (40 pieces), screws- or shelf supports variants (20 pieces each), cover cap signal white (40 pieces), Cabineo hexagon bit 1/4" GL 80 mm and the corresponding Cabineo X screw-in aid (1 piece each)	

## Accessories



Cabineo screw	Art. No.
Cabineo 12, 500 pieces	<b>186380</b>
Cabineo 12, 2000 pieces	<b>186381</b>
Cabineo 8, 500 pieces	<b>186382</b>
Cabineo 8 M6, 500 pieces	<b>186384</b>



Cabineo X shelf support	Art. No.
Ø 5 mm, 500 pieces	<b>186386</b>
Ø 3 mm, 500 pieces	<b>186388</b>

